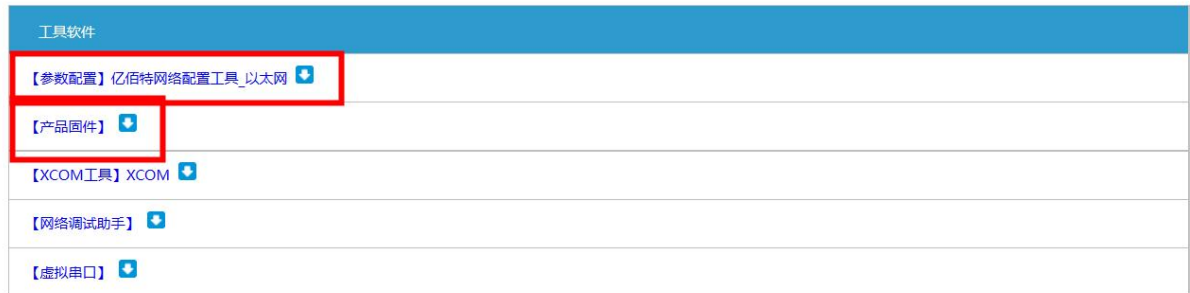


Upgrade instructions

Network upgrade firmware operation steps:

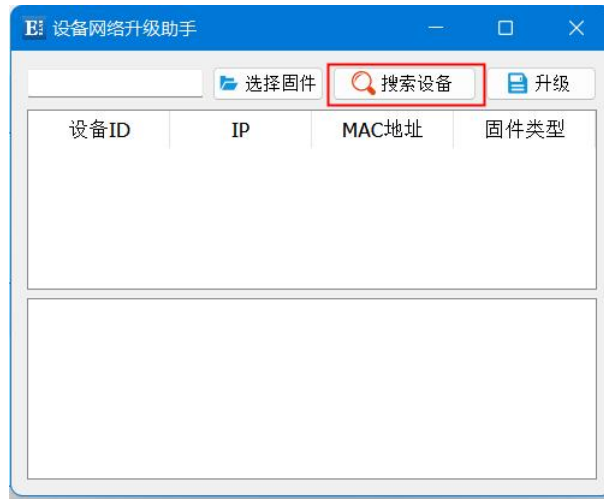
Step 1: download the upper computer and "product firmware" at the corresponding location on the official website;



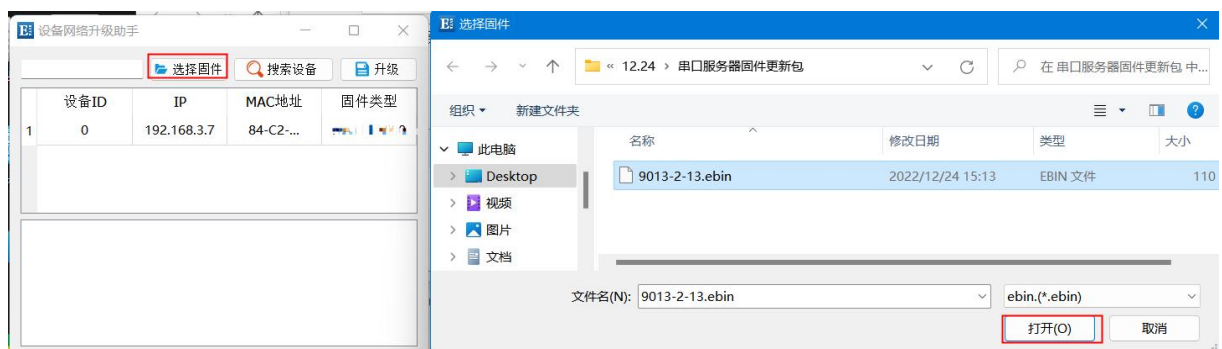
Step 2: Open the upper computer, click "Menu", and select "Device Upgrade Assistant";



Step 3: In the pop-up "Device Network Upgrade Assistant" dialog box, click "Search Device" (the computer and device should be in the same network segment), and click "Stop Search" after finding the device;



Step 4: Click "Select Firmware", select the corresponding firmware, and then click "Open";

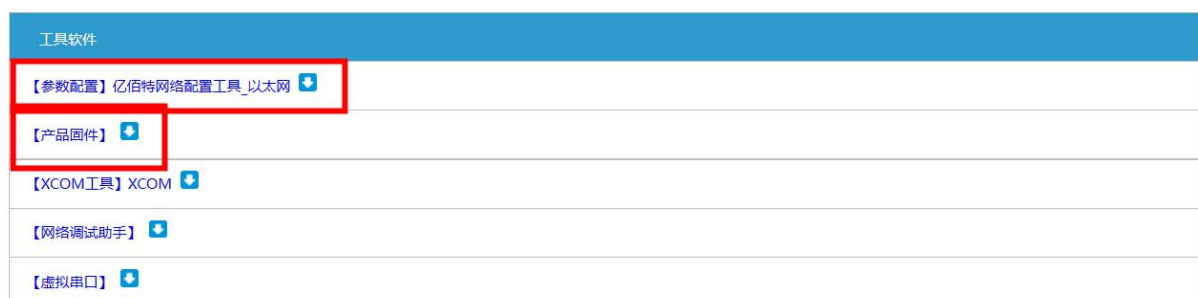


Step 5: Select the equipment to be upgraded, click "Upgrade", the progress bar will start to change, and wait for the upgrade to complete.



Operating steps for serial port firmware upgrade:

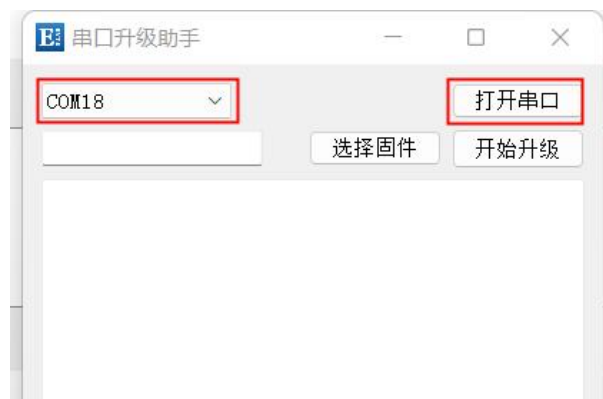
Step 1: download the upper computer and "product firmware" at the corresponding location on the official website;



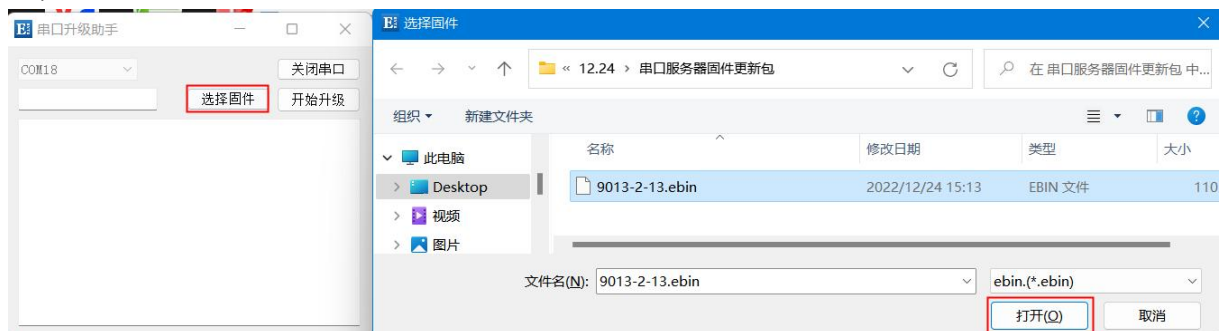
Step 2: Open the upper computer, click "Menu", and select "Serial port upgrade assistant";



Step 3: First connect the USB port of the computer, select the corresponding port number in the pop-up "Serial Port Upgrade Assistant" dialog box, and click "Open Serial Port";



Step 4: Click "Select Firmware", select the corresponding firmware, and then click "Open";



Step 5: Click "Start upgrading", the progress bar will start to change, and wait for the upgrade to complete.

[Note] Power on again to trigger the upgrade.

